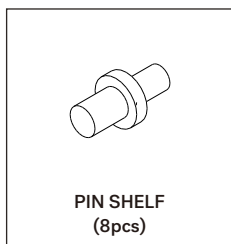


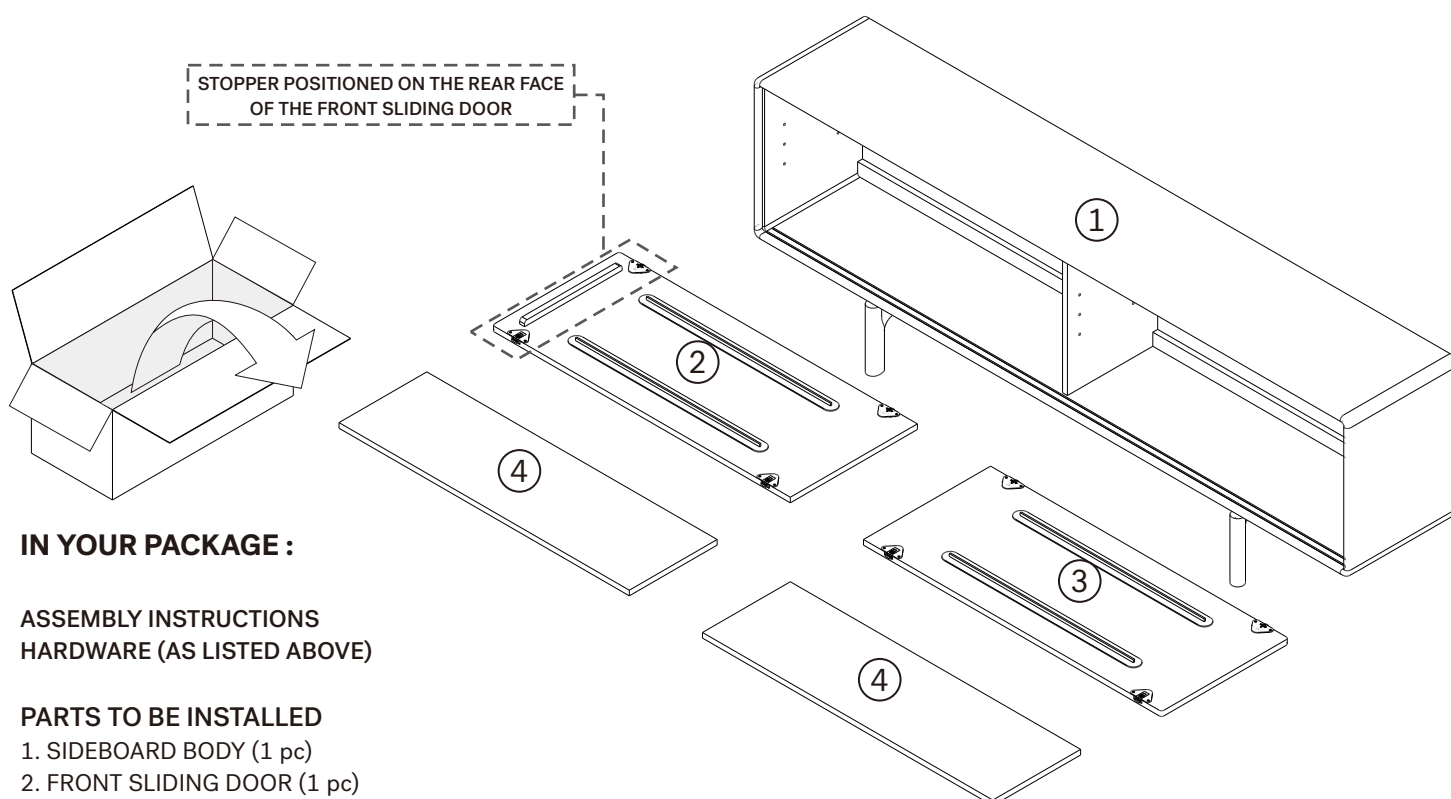
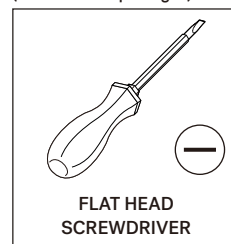
FLOW SIDEBORD - 2 SLIDING DOORS ASSEMBLY INSTRUCTIONS FOR SIDEBORD INSTALLATION



HARDWARE ENCLOSED



TOOLS REQUIRED (Not include in packaged)



IN YOUR PACKAGE :

ASSEMBLY INSTRUCTIONS
HARDWARE (AS LISTED ABOVE)

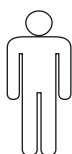
PARTS TO BE INSTALLED

1. SIDEBORD BODY (1 pc)
2. FRONT SLIDING DOOR (1 pc)
3. BACK SLIDING DOOR (1 pc)
4. SHELVES (2 pcs)

SYMBOLS



DIRECTION



NUMBER OF
PERSONS NEEDED

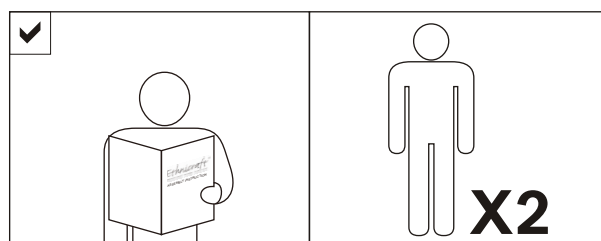


USE HAND



USE FLAT HEAD
SCREWDRIVER
TO TIGHTEN

NOTICE

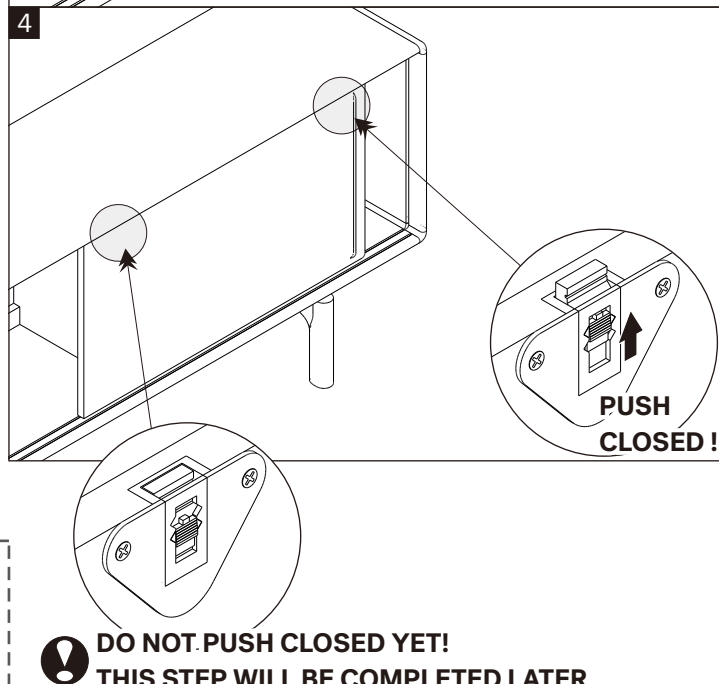
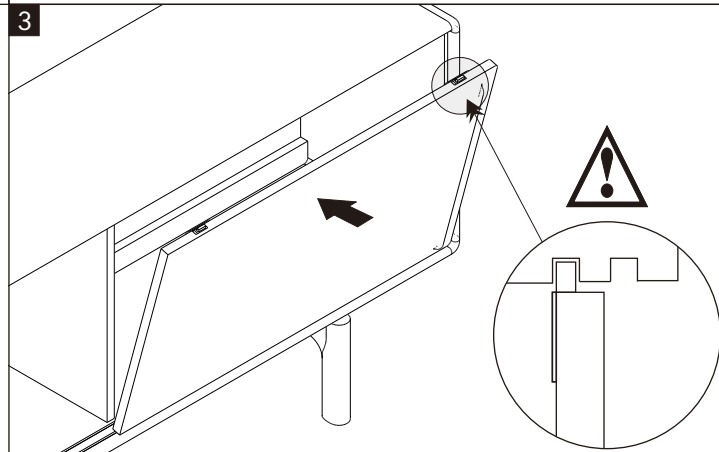
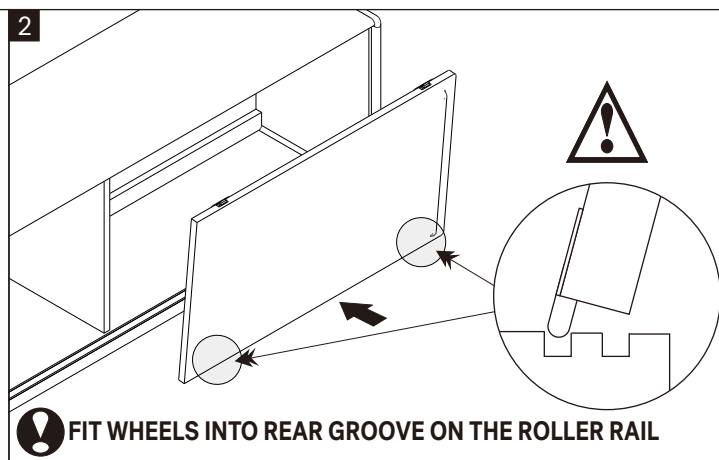
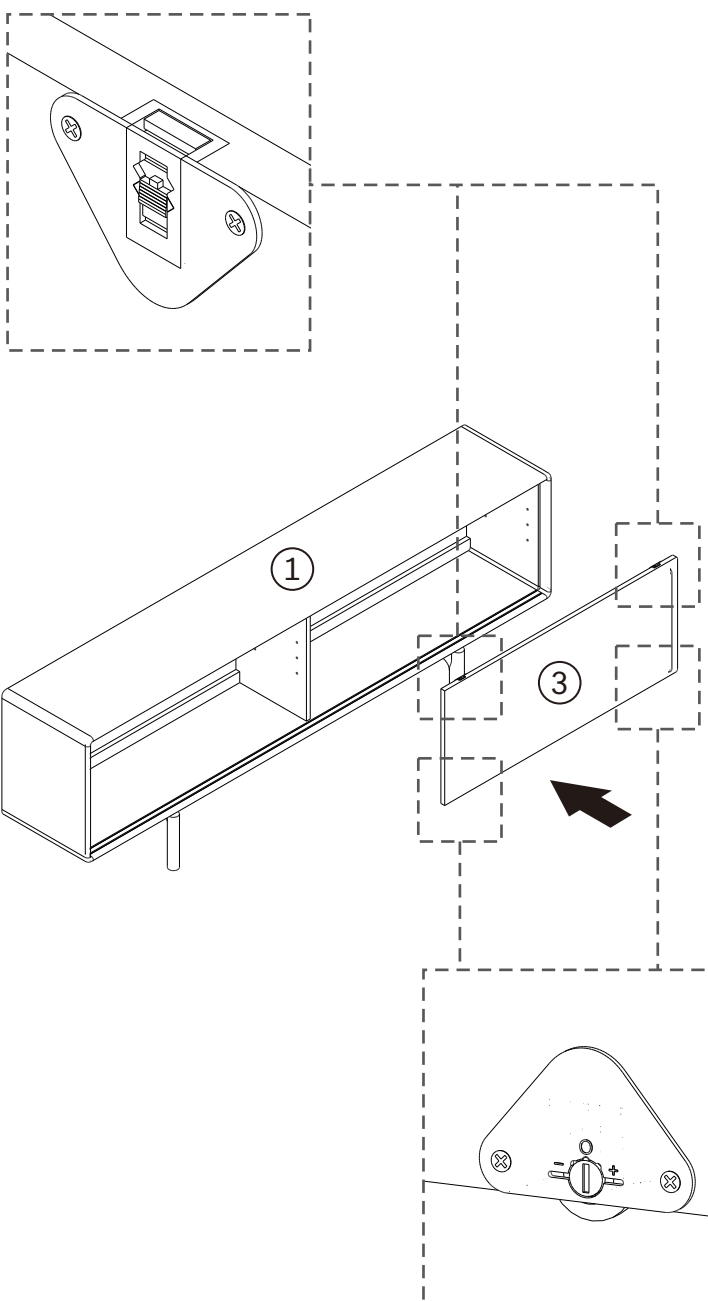
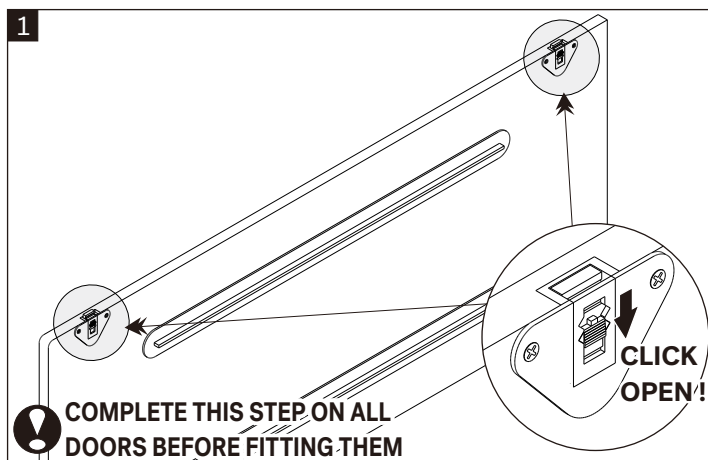


FLOW SIDEBORD - 2 SLIDING DOORS

ASSEMBLY INSTRUCTIONS FOR SIDEBORD INSTALLATION



A FITTING BACK SLIDING DOOR TO SIDEBORD BODY



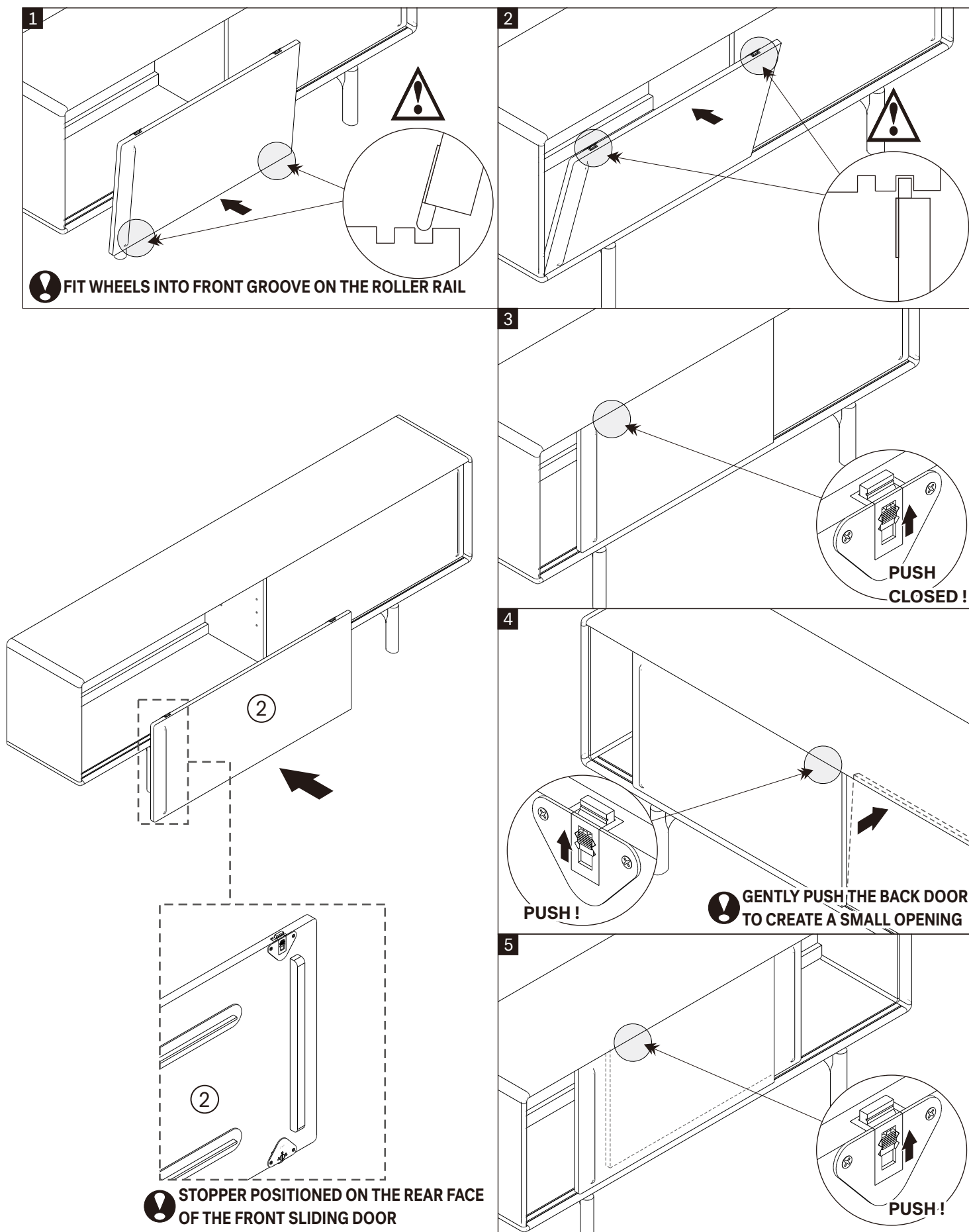
**! DO NOT PUSH CLOSED YET!
THIS STEP WILL BE COMPLETED LATER**

FLOW SIDBOARD - 2 SLIDING DOORS

ASSEMBLY INSTRUCTIONS FOR SIDBOARD INSTALLATION



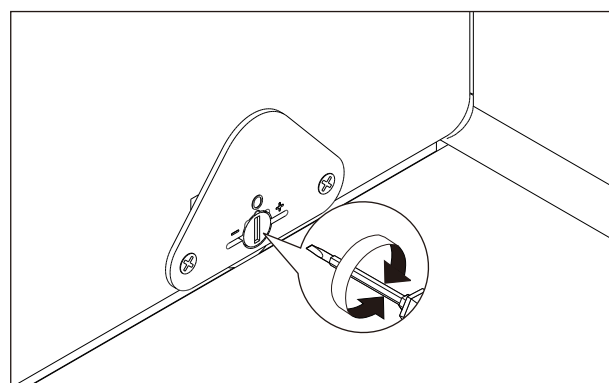
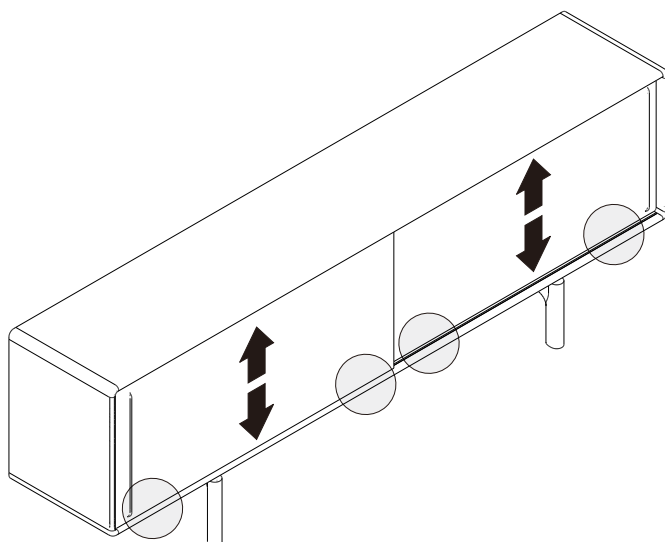
B FITTING FRONT SLIDING DOOR TO SIDBOARD BODY



FLOW SIDEBORD - 2 SLIDING DOORS ASSEMBLY INSTRUCTIONS FOR SIDEBORD INSTALLATION

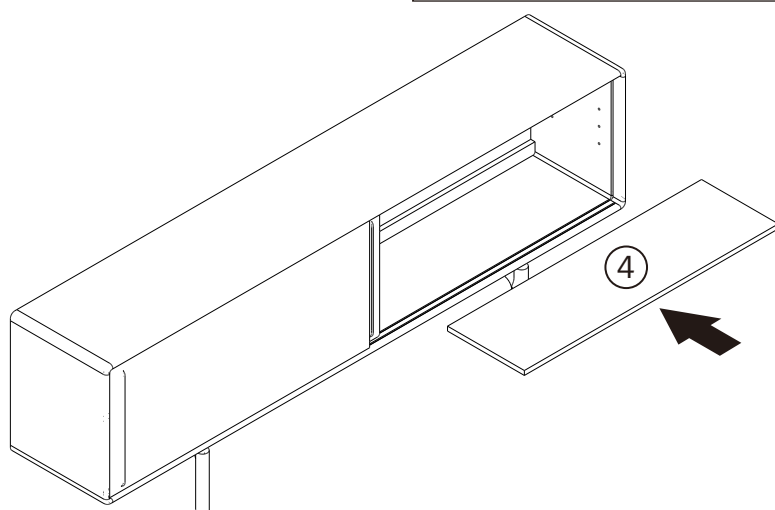
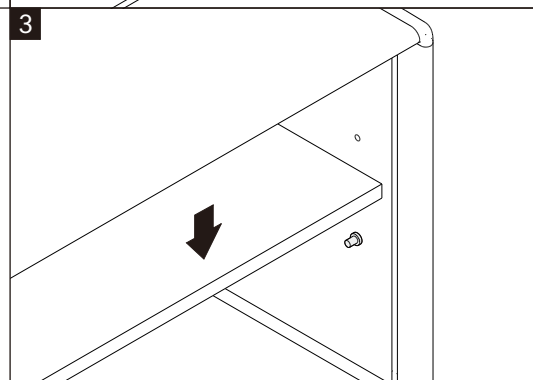
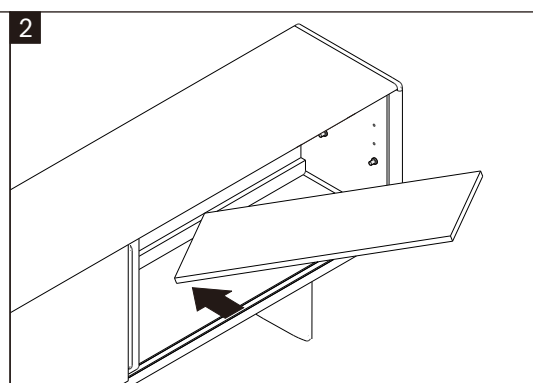
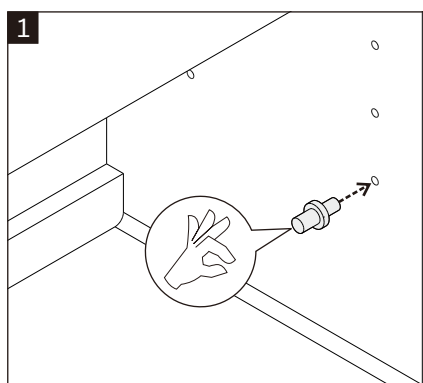


C ADJUST ALIGNMENT OF DOORS



! ADJUST BOTH SIDES, LEFT AND RIGHT, AS NEEDED

D PLACING SHELVES



- CHOOSE THE DESIRED SHELF HEIGHT
- USE PIN SHELF (8X)
- REPEAT THIS STEP FOR OTHER SHELF

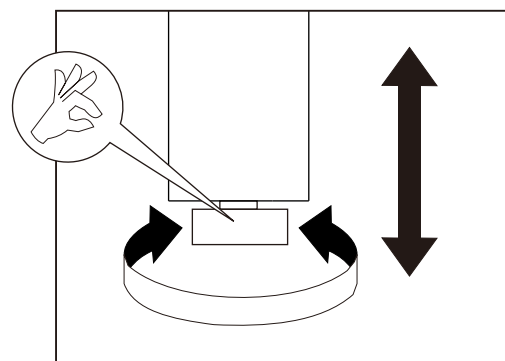
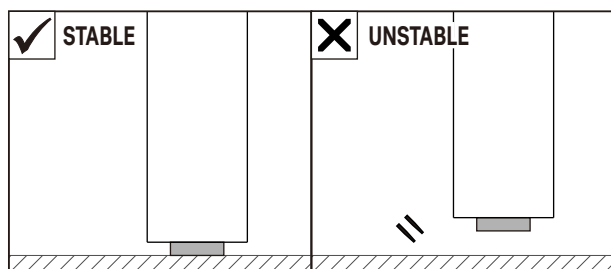
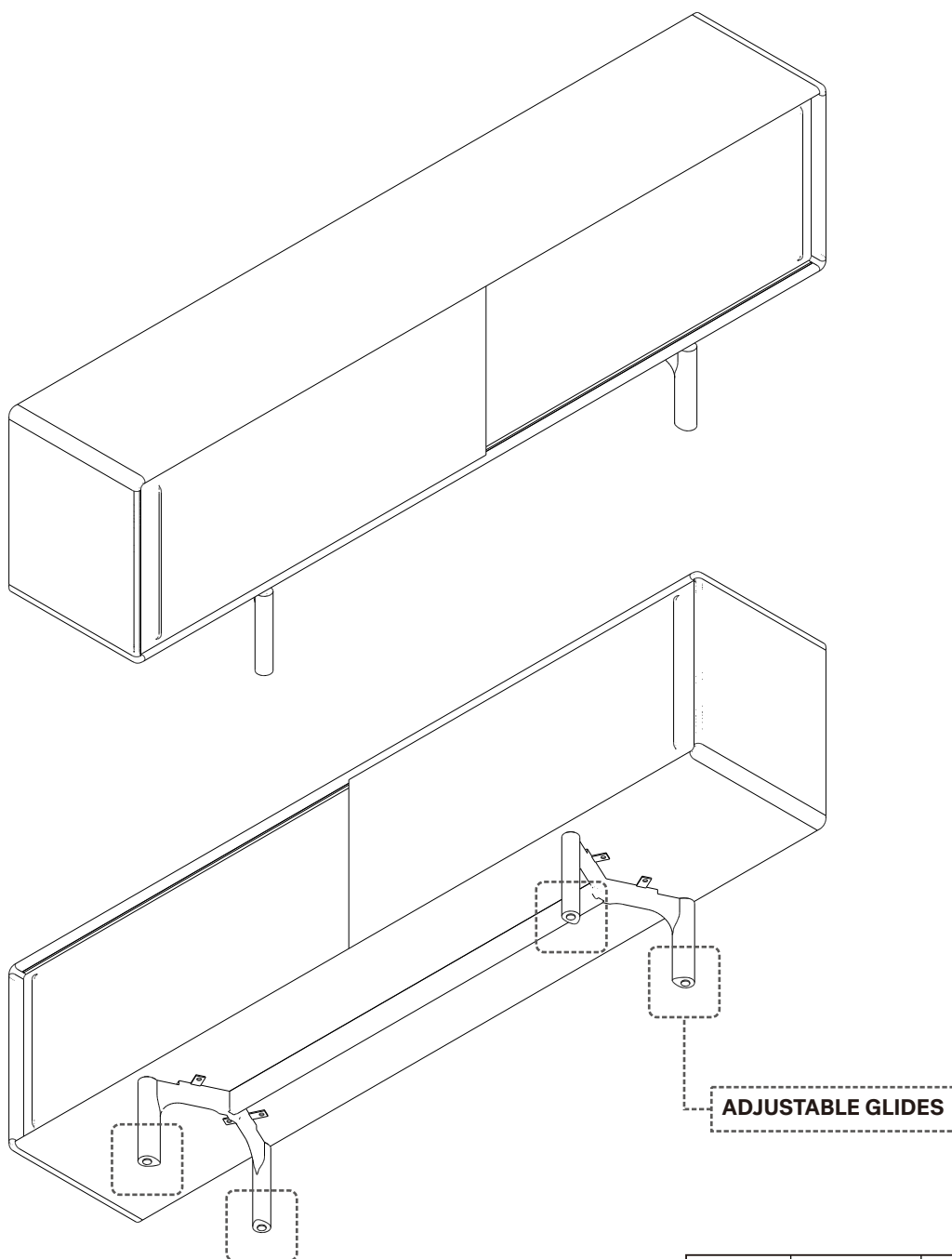


FLOW SIDEBORD - 2 SLIDING DOORS

ASSEMBLY INSTRUCTIONS FOR SIDEBORD INSTALLATION



E MODIFY THE ADJUSTABLE GLIDES



NOTE :
TO ENSURE STABILITY, ALL GLIDES SHOULD BE ADJUSTED
TO MAKE EVEN CONTACT WITH THE FLOOR.